



Generator Controller

Henz TG100



Introduction

TG100 is a microprocessor – based controller that samples and checks the single–phase and three–phase voltage of the main power, transfers the load between the main power and the generator and controls the system failures. All the parameters would be read easily through the big LCD of TG100. This controller includes 3 operational modes: **Automatic, Test, Off** which you can define your desired mode through the controller’s front panel’s buttons.

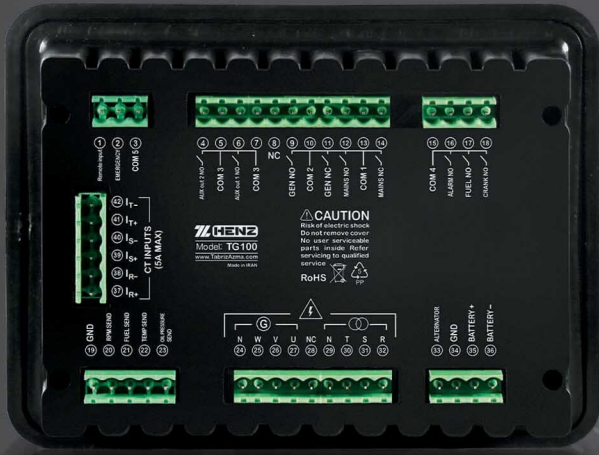
As a monitoring and operating unit, this controller can be installed and operated on all generators including gas, diesel and gasoline.

Operator can set and save any parameter by pressing the “ Menu “ button and applying the password. This significant feature of the TG100 allows it to be easily adapted to any generator without the necessity for a separate unit.

Features



- Automatic Start & Stop of generator
- Starting the diesel generator and transferring the load in case of power failure
- Measurement of voltage and current of three phases of main electricity and generator
- Diagnosing generator faults
- Automatic transferring of load
- Containing 3 work modes of : Automatic, Test, Off
- Including LCD to display Measured values and the menus
- Manual control of main contactor (MC) and generator contactor (GC) during the TEST mode
- Ability to connect to analog sensors of water temperature, oil pressure and fuel level
- Ability to choose screen saver mode to reduce device power consumption

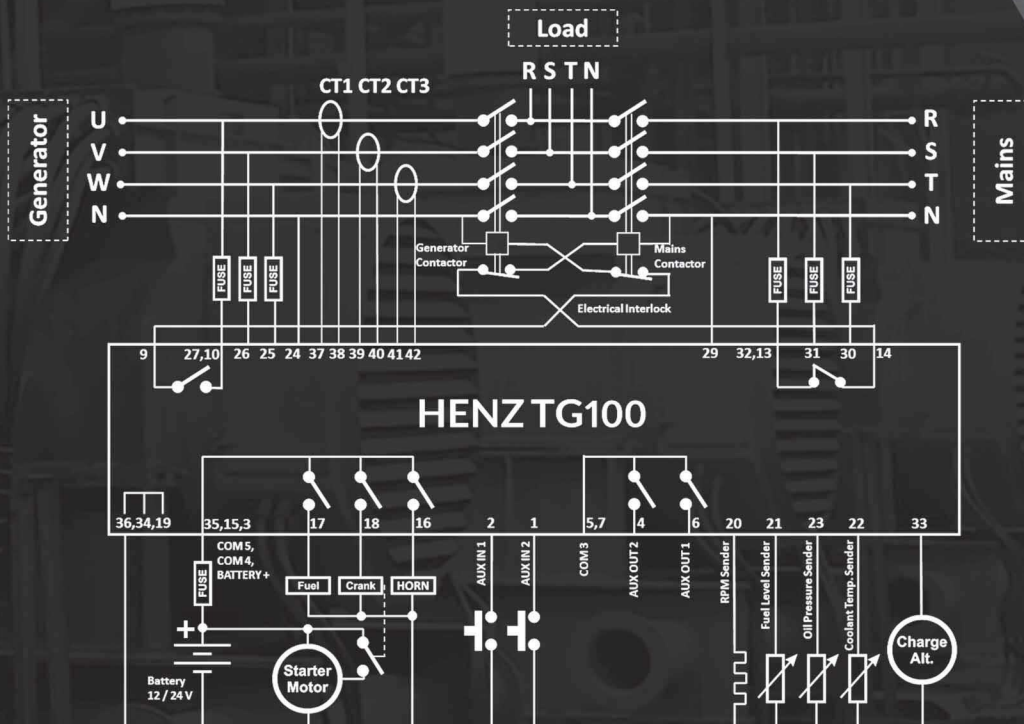


Inputs & Outputs



- Input of three-phase of Mains voltage and three-phase voltage of Generator
- Input of three-phase of current transformer
- 12V or 24V DC power supply
- Analog input of water temperature sensor
- Analog input of oil pressure sensor
- Analog input of fuel level sensor
- DC supply voltage input
- Digital input of Remote start
- Digital input of Emergency Stop
- Start relay output (CRANK)
- Fuel solenoid relay output
- Alarm relay output
- Mains contactor relay output (MC)
- Generator contactor relay output (GC)

Henz TG100





Generator Controller

Henz TG100

Alarms



- Start Failure
- Motor's low speed and over speed
- Generator's low voltage and over voltage
- Generator's over current
- Battery's low voltage and over voltage
- Mains power's low voltage and over voltage
- Water High temperature
- Charger's low voltage
- Low oil pressure



WebSite: www.tabrizazma.com

Email: info@tabrizazma.com

Fax: +98-4136694346

Tel: +98-414145

